

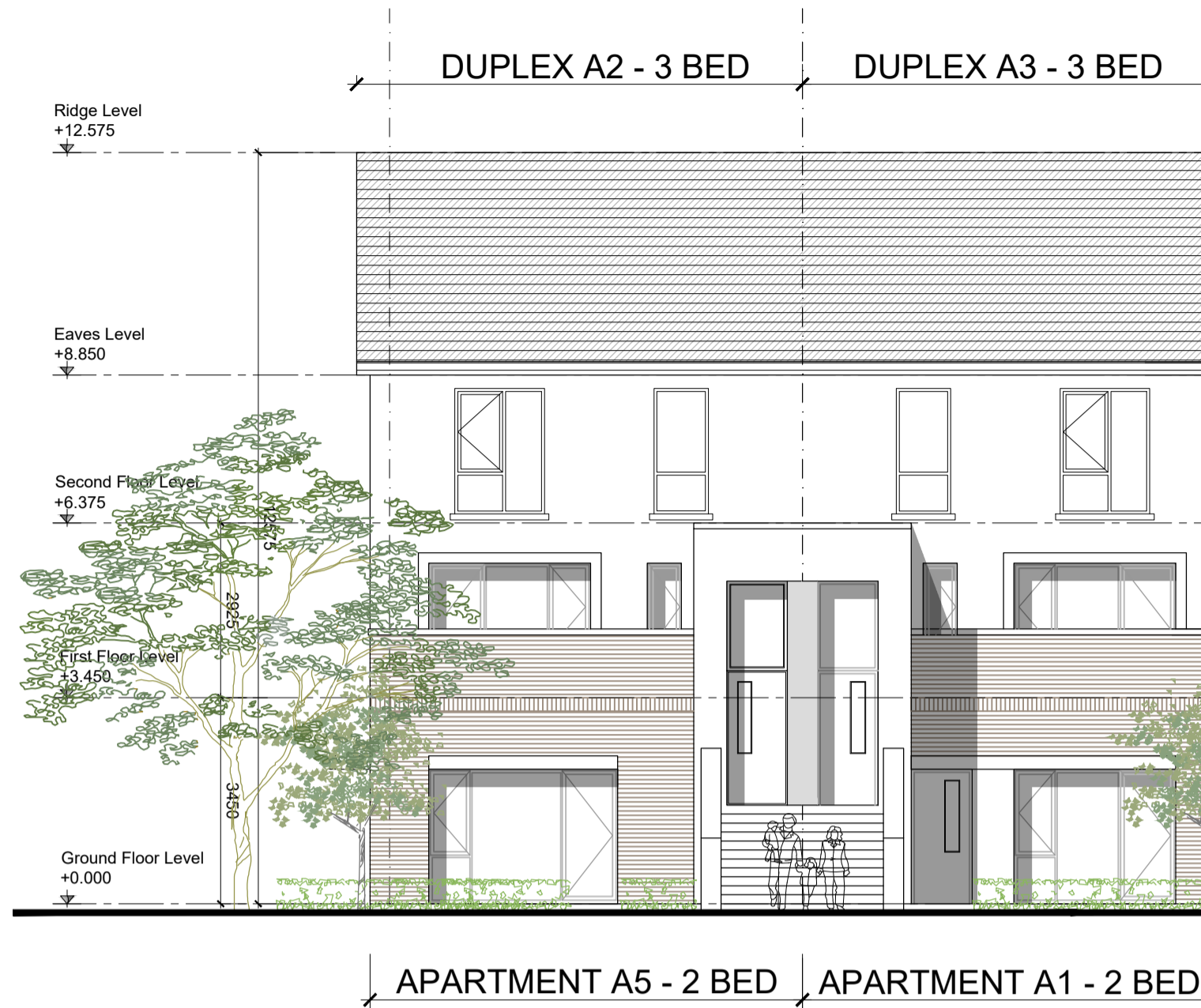
GENERAL NOTES

THIS DRAWING TO BE READ IN CONJUNCTION WITH ARCHITECT'S DRAWINGS, CONSULTANT ENGINEER'S DRAWINGS AND SPECIFICATIONS & LANDSCAPE ARCHITECT'S DRAWINGS. REFER TO ARCHITECT'S SITE PLAN FOR NORTH ORIENTATION.

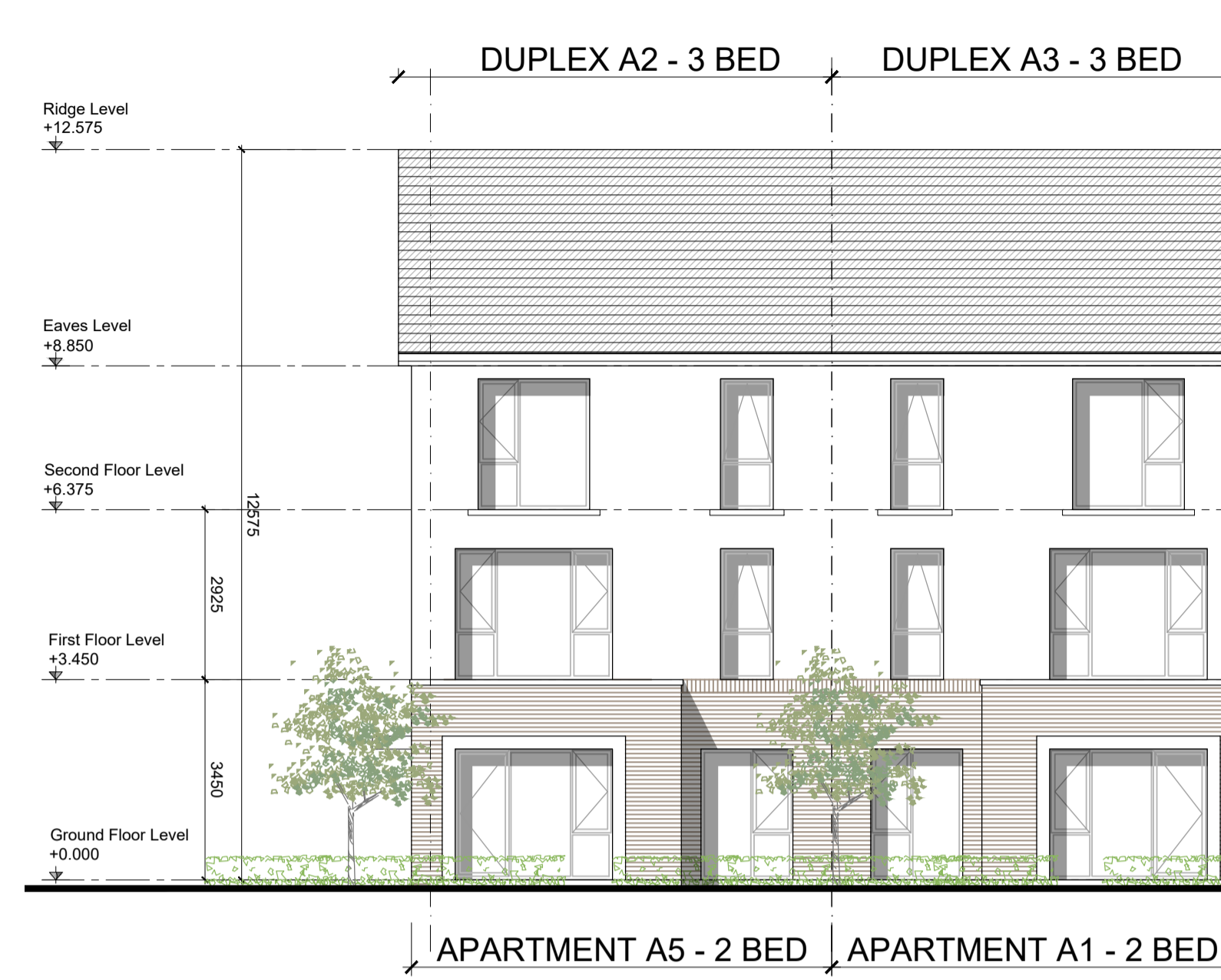
LEVELS GIVEN ON HOUSE TYPE DRAWINGS ARE GIVEN TO A LOCAL ABSOLUTE ZERO LEVEL. FOR SPECIFIC LEVELS DEPENDING ON INDIVIDUAL UNIT LOCATION, REFER TO ARCHITECT'S CONTEXT SECTIONS AND ENGINEER'S DRAWINGS WHERE LEVELS ARE ALL GIVEN IN RELATION TO LAND SURVEYOR'S BENCHMARK BASED ON MALIN HEAD DATUM LEVEL.

NOTES ON FINISHES:

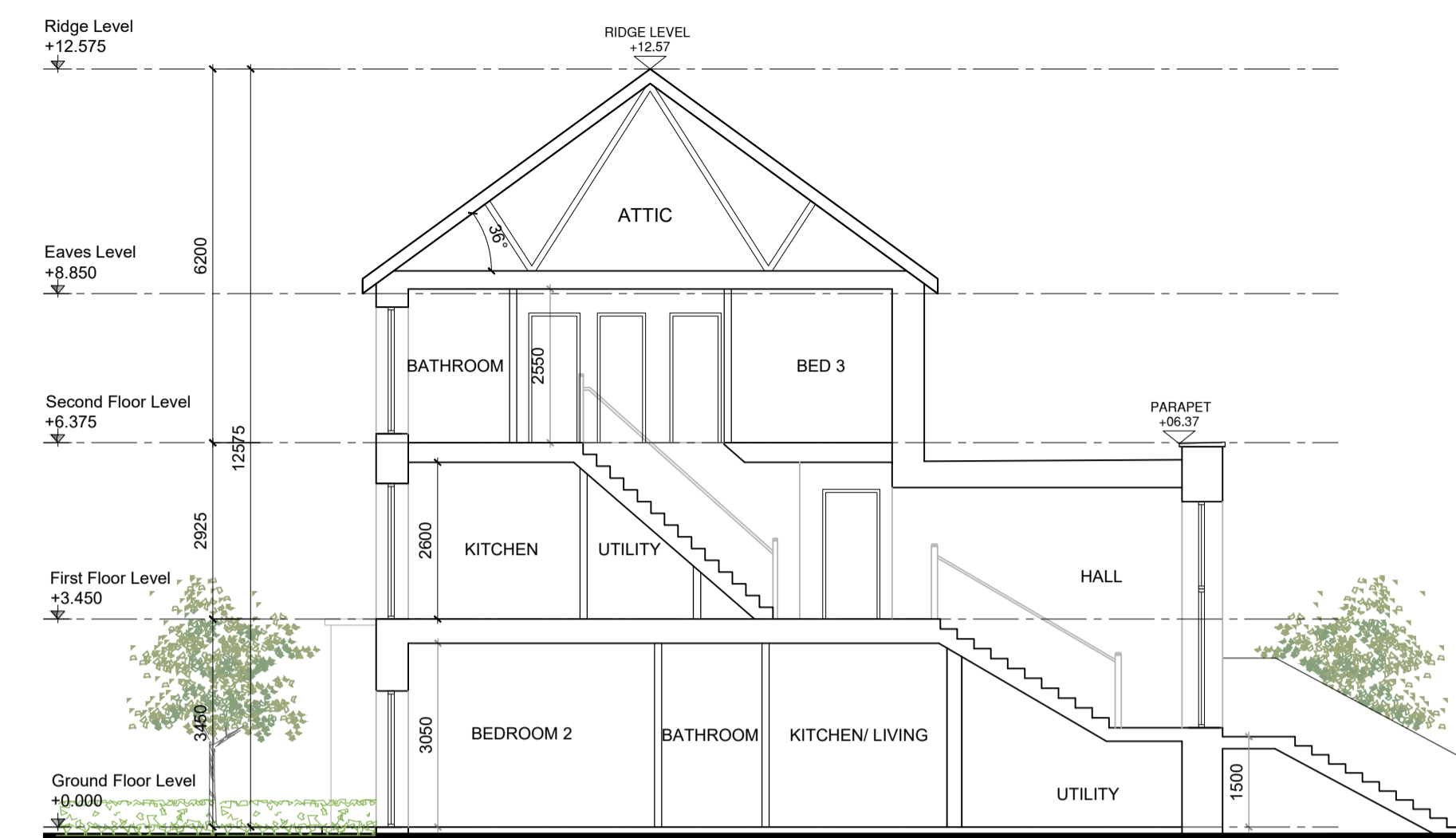
- ROOF:** TO BE FINISHED IN SLATE OR CONCRETE ROOF TILES IN SELECTED COLOUR OR SIMILAR APPROVED.
- WALLS:** SELECTED CLAY BRICKWORK WHERE INDICATED OTHERWISE PAINTED SAND / CEMENT RENDER OR SELF COLOURED RENDER. EXPRESSED BANDS AROUND EXTERNAL OPES/ EXPRESSED LINTOLS OVER EXTERNAL OPES WHERE INDICATED TO BE RECONSTITUTED STONE (LIGHT CREAM LIMESTONE OR GRANITE EFFECT) OR RENDER.
- JOINERY:** ALL WINDOWS AND DOORS, FRAMES AND LEAVES, TO BE ALUMINIUM POWDER-COATED TO APPROVED COLOUR OR uPVC. OBSCURE GLAZING WHERE INDICATED TO SENSITIVE WINDOWS.
- RAINWATER GOODS:** GUTTERS, DOWNPIPES, AND FIXINGS TO BE uPVC OR ALUMINIUM POWDER COATED TO SELECTED COLOUR TO MATCH ROOF SLATES.
- * SOLAR PANELS:** INDICATIVE SOLAR PANEL POSITION, FINAL SOLAR PANEL POSITION DEPENDS ON HOUSE ORIENTATION. THE SOLAR PANELS SHOWN ARE A PROVISIONAL OPTION TO SATISFY RENEWABLE ENERGY REQUIREMENTS OF BUILDING REGS PART L. SOLAR PANELS MAY BE OMITTED IN FAVOUR OF ALTERNATIVE RENEWABLE ENERGY SOURCE.



FRONT ELEVATION



REAR ELEVATION



SECTION A-A

APARTMENT TYPE A5 1 STOREY - 2 BEDROOMS

AREA SCHEDULE	
GROUND FLOOR	81.6 m ² / 878 ft ²
TOTAL	81.6 m² / 878 ft²

APARTMENT TYPE A 1 STOREY - 1 BEDROOM

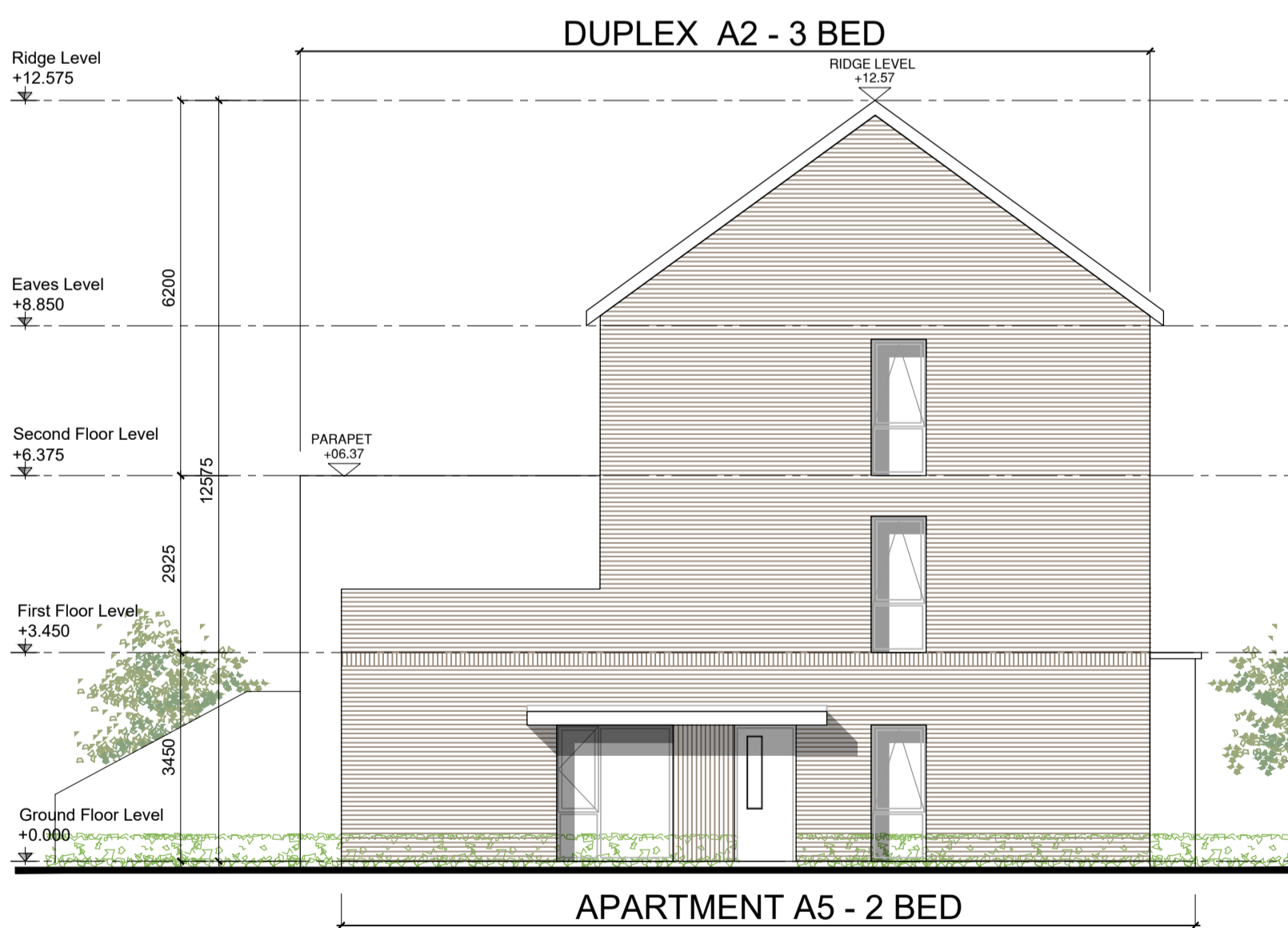
AREA SCHEDULE	
GROUND FLOOR	82 m ² / 883 ft ²
TOTAL	82 m² / 883 ft²

DUPLEX TYPE A2 2 STOREY - 2 BEDROOMS

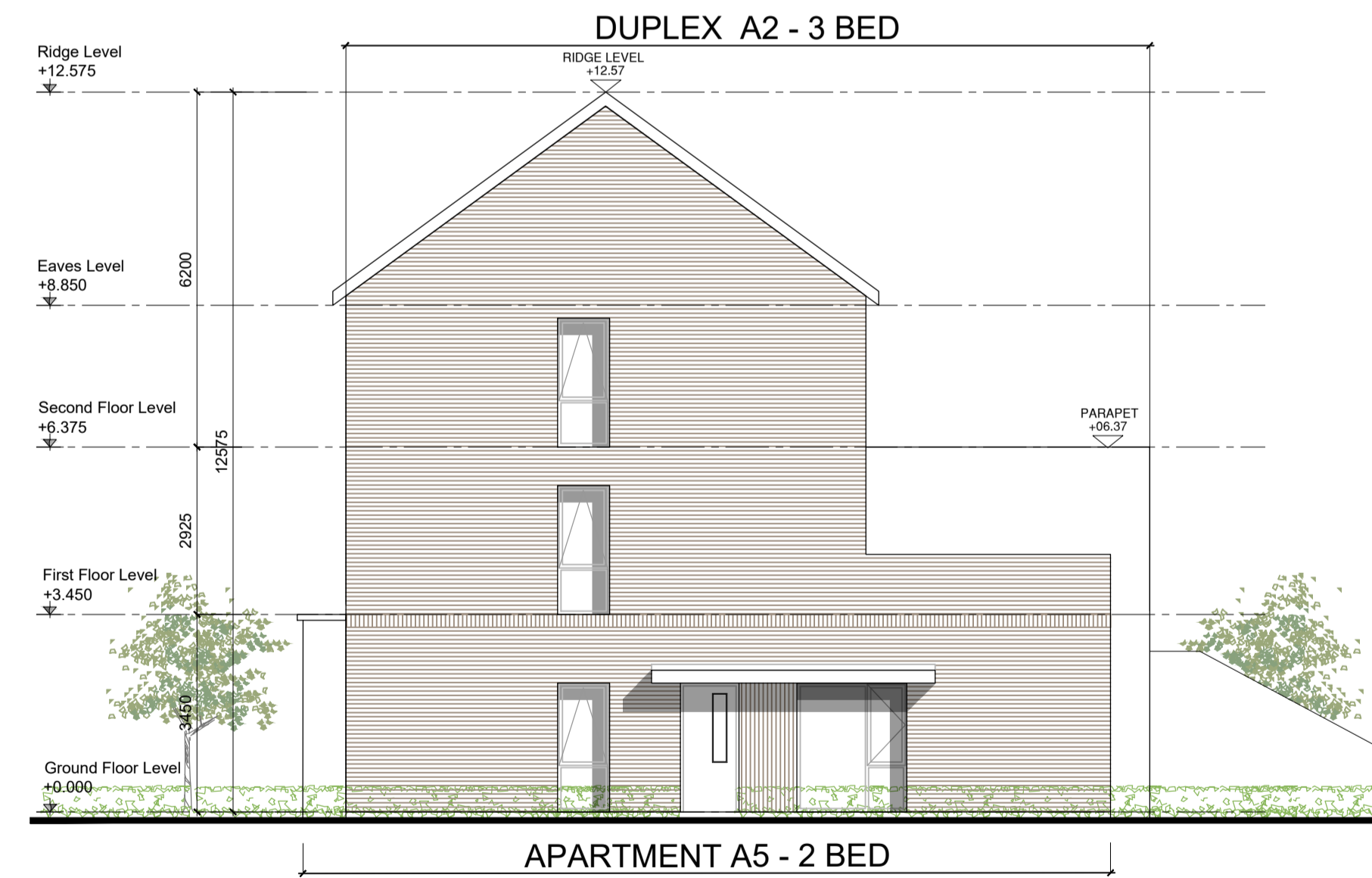
AREA SCHEDULE	
FIRST FLOOR	59.8 m ² / 643 ft ²
SECOND FLOOR	54.6 m ² / 587 ft ²
TOTAL	114.4 m² / 1230 ft²

DUPLEX TYPE A3 2 STOREY - 3 BEDROOMS

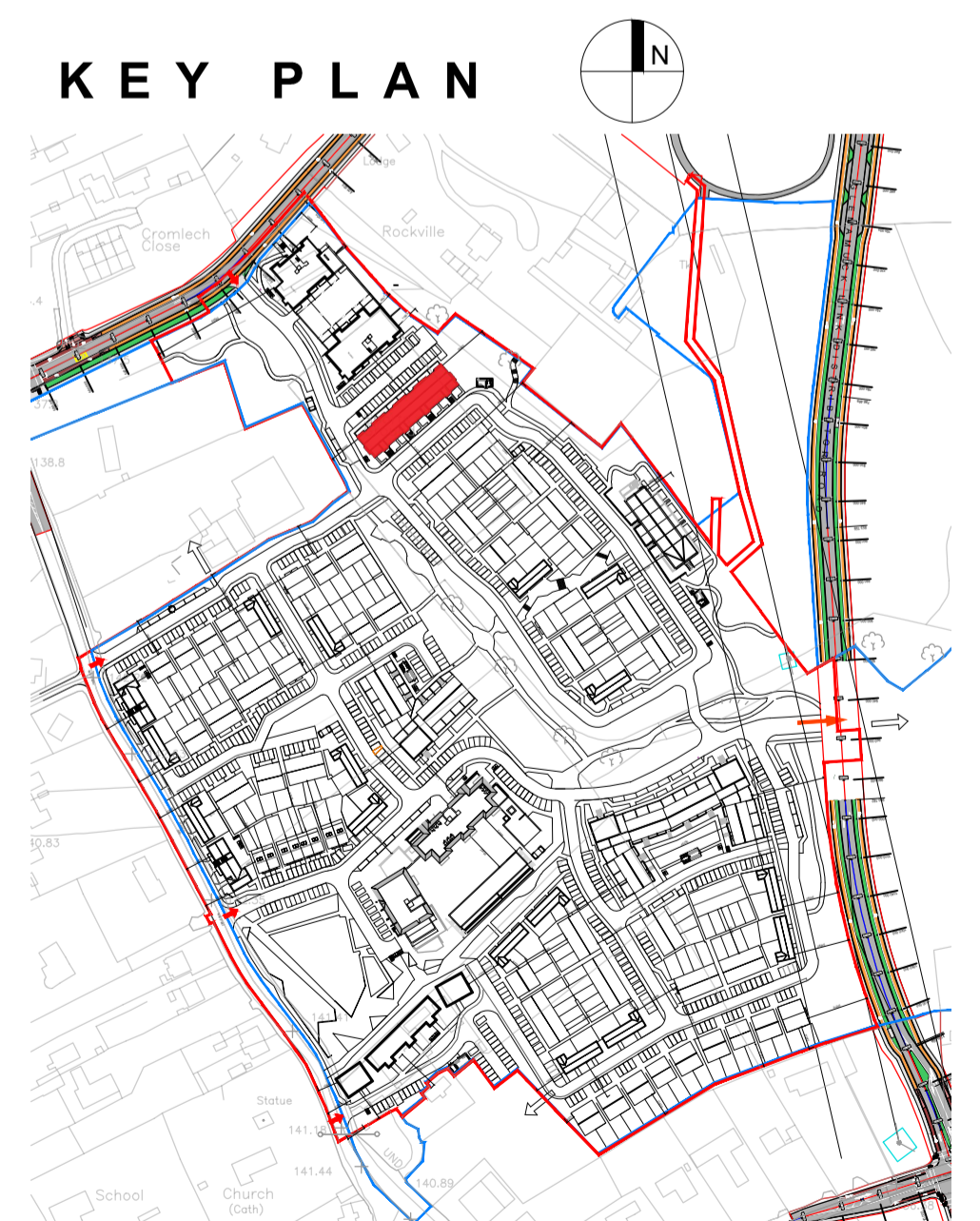
AREA SCHEDULE	
FIRST FLOOR	58.3 m ² / 644 ft ²
SECOND FLOOR	53.1 m ² / 628 ft ²
TOTAL	111.4 m² / 1199 ft²



SIDE ELEVATION



SIDE ELEVATION



NOTES:

DO NOT SCALE FROM DRAWINGS. WORK TO FIGURED DIMENSIONS ONLY. ARCHITECT TO BE NOTIFIED OF ALL DISCREPANCIES.

SHD STAGE 3

REVISIONS		
DATE	DESCRIPTION	No.

	PROJECT TITLE:	DATE:	DRAWN BY:
	Kilterman Village SHD	JUN '22	LQMD
	DRAWING TITLE:	SCALE:	REVISION:
	Duplex Block C Elevations & Sections- part V block	1:100	*
	JOB NO:	DRAWING NO:	
	21009	PL311	